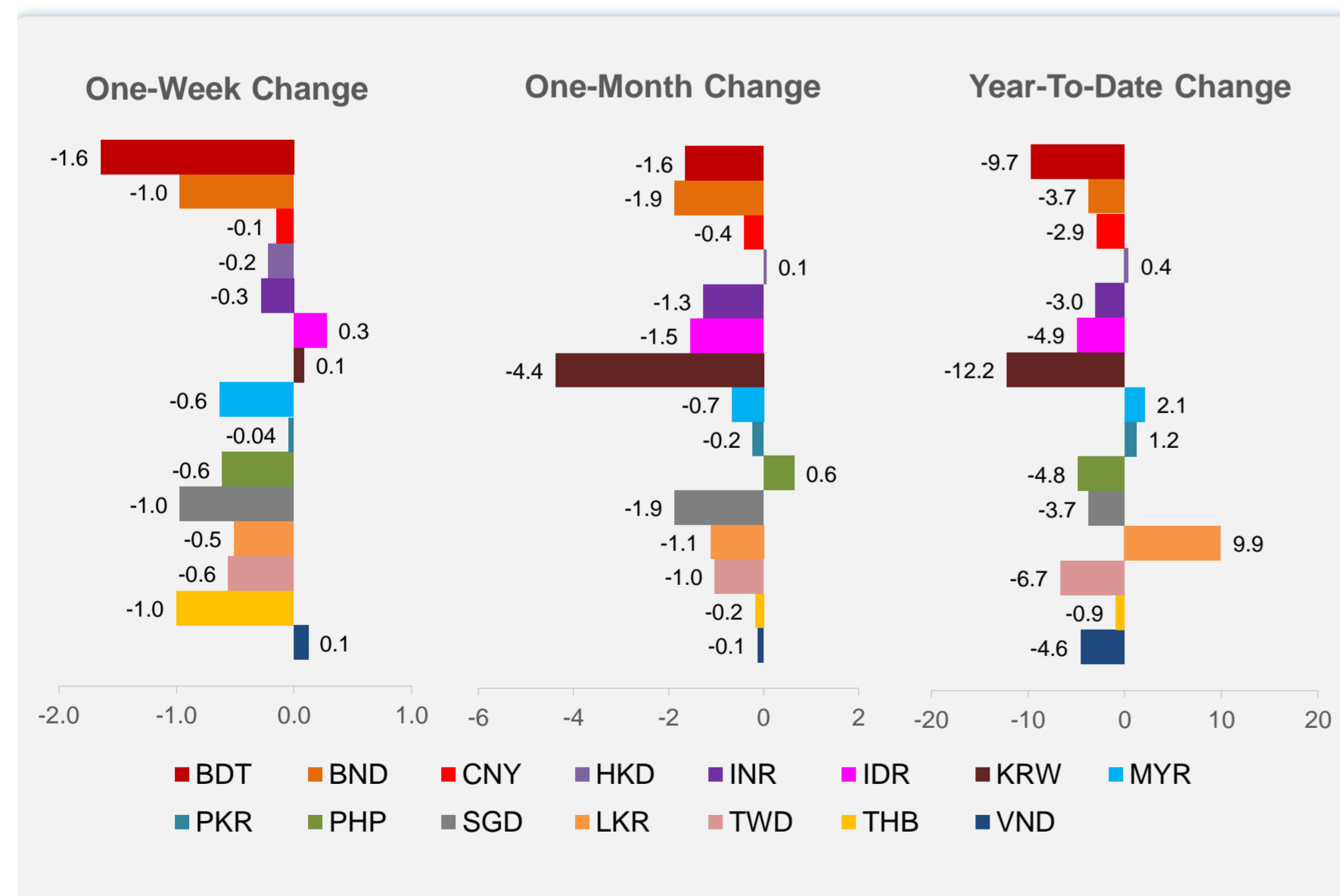
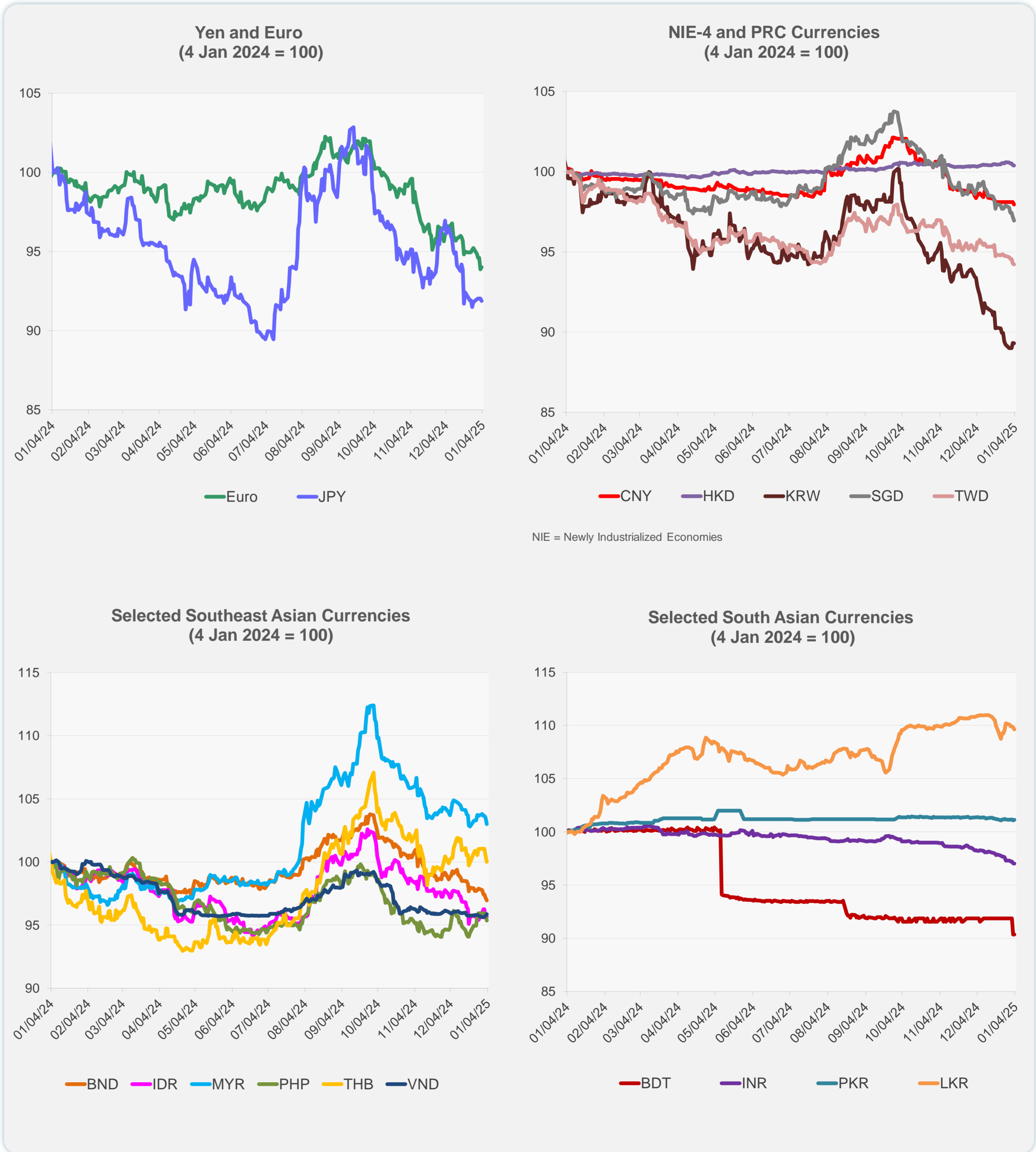
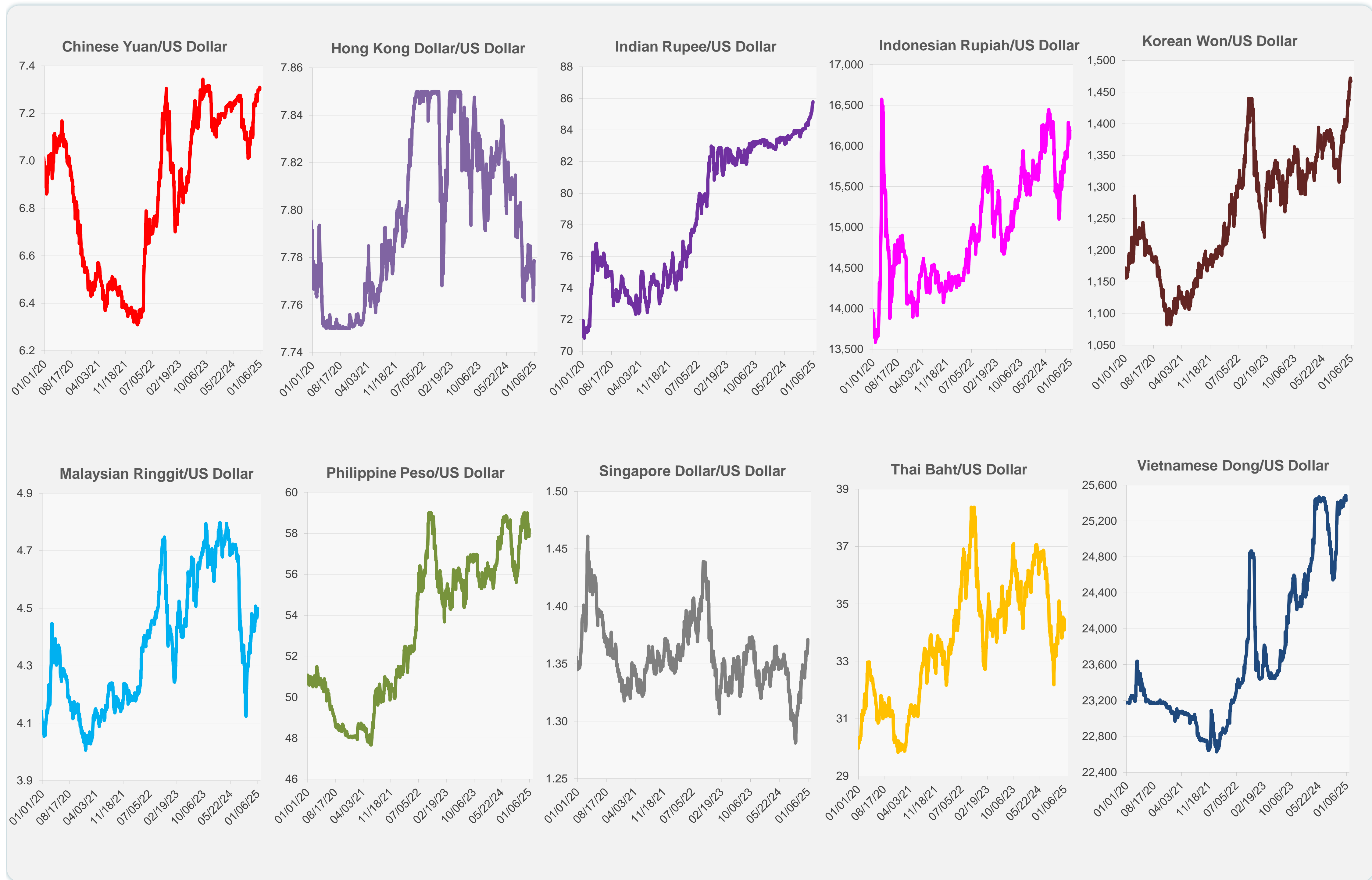


	Latest Closing	% change from Previous Day	% change from 01-Jan-24
Euro	0.97	0.13	-6.84
Japanese yen (JPY)	157.40	-0.16	-10.49
Bangladeshi taka (BDT)	121.50	0.00	-9.67
Brunei dollar (BND)	1.37	-0.24	-3.71
Chinese yuan (CNY)	7.31	-0.15	-2.87
Hong Kong dollar (HKD)	7.78	-0.02	0.42
Indian rupee (INR)	85.78	-0.03	-2.97
Indonesian rupiah (IDR)	16,190.00	0.03	-4.90
Korean won (KRW)	1,467.15	-0.03	-12.20
Malaysian ringgit (MYR)	4.50	-0.48	2.09
Pakistan rupee (PKR)	278.50	0.05	1.20
Philippine peso (PHP)	58.20	-0.49	-4.83
Singapore dollar (SGD)	1.37	-0.24	-3.71
Sri Lanka rupee (LKR)	293.75	-0.19	9.94
Taipei,China NT dollar (TWD)	32.90	-0.05	-6.66
Thai baht (THB)	34.45	-0.48	-0.89
Vietnamese dong (VND)	25,425.00	0.13	-4.55



Note: Negative/Decreasing values indicate depreciation of local currency, and positive/increasing values indicate appreciation.
Source: ADB calculations using data from Haver Analytics.

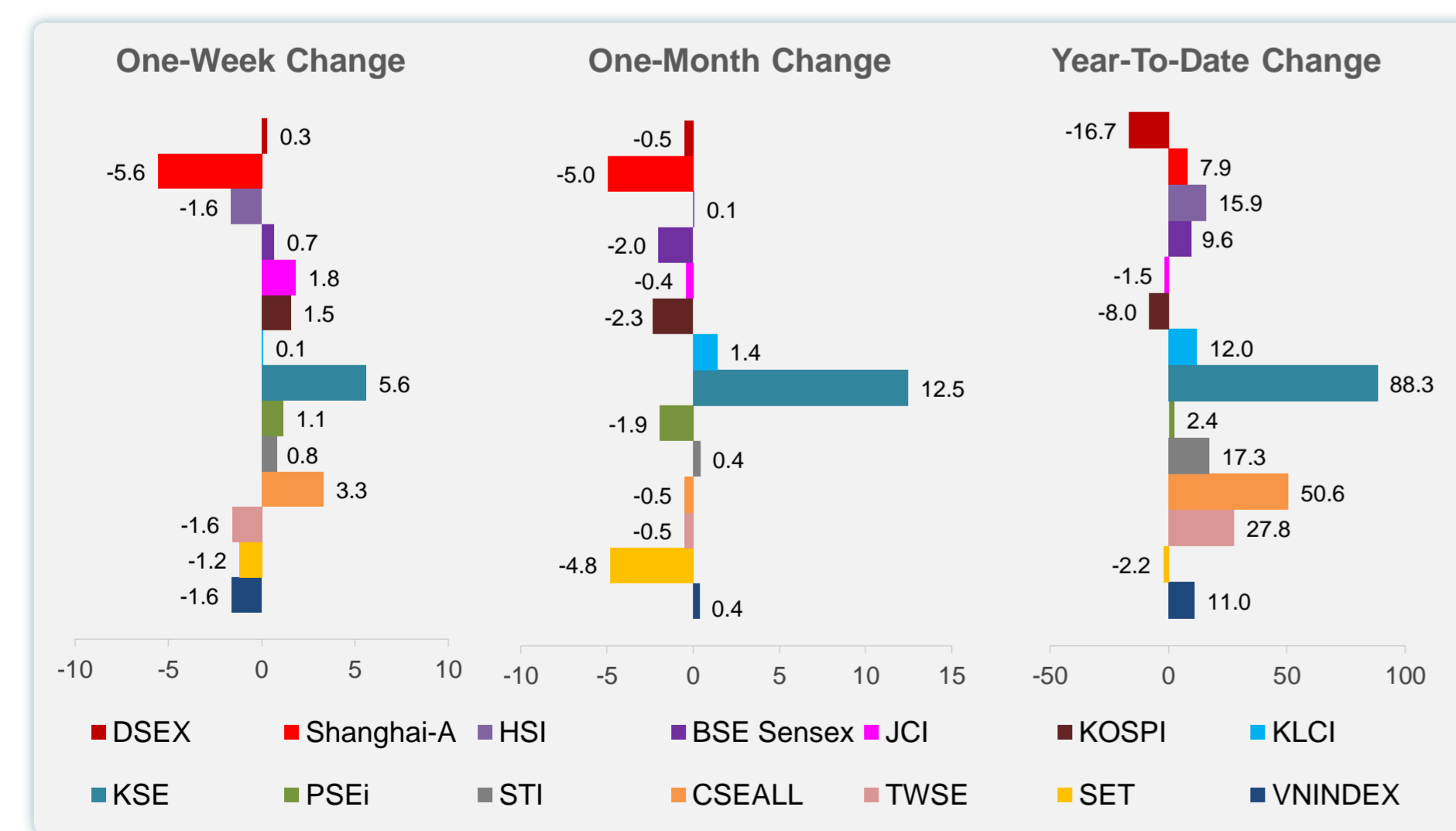
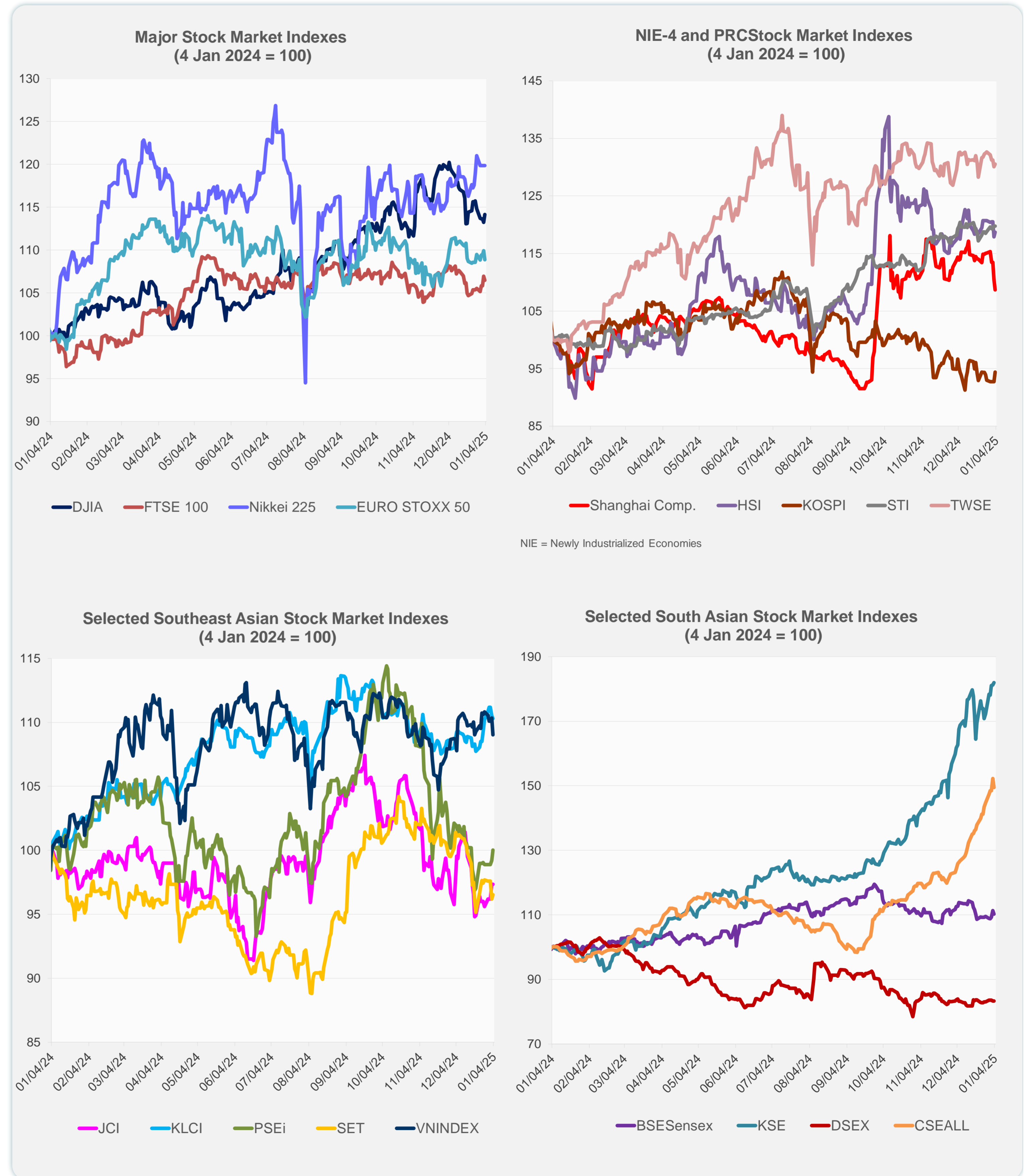


Source: Haver Analytics.

Daily Market Watch
STOCK INDEXES

6 January 2025, 9:00 AM Manila

	Latest Closing	% change from Previous Day	% change from 01-Jan-24
US Dow Jones Ind Avg	42,732.13	0.80	13.38
US NASDAQ	19,621.68	1.77	30.71
US S&P 500	5,942.47	1.26	24.58
UK FTSE 100	8,223.98	-0.44	6.35
EURO STOXX 50	4,871.45	-0.94	7.74
Japan NIKKEI 225	39,894.54	0.00	19.22
Bangladesh DSEX	5,199.62	0.00	-16.71
PRC Shanghai Comp.	3,211.43	-1.57	7.95
Hong Kong, China HSI	19,760.27	0.70	15.91
India BSE Sensex	79,223.11	-0.90	9.62
Indonesia JCI	7,164.43	0.02	-1.49
Korea, Rep. of KOSPI	2,441.92	1.79	-8.04
Malaysia KLCI	1,629.46	-0.21	12.02
Pakistan KSE 100	117,586.98	0.40	88.29
Philippines PSEi	6,603.81	0.82	2.38
Singapore STI	3,801.83	0.03	17.33
Sri Lanka CSEALL	16,049.42	-1.83	50.64
Taipei, China TWSE	22,908.30	0.33	27.76
Thailand SET	1,384.76	0.36	-2.20
Viet Nam VNINDEX	1,254.59	-1.19	11.03



Sources: ADB calculations using data from CEIC Data Company and Haver Analytics.



Sources: CEIC Data Company and Haver Analytics.

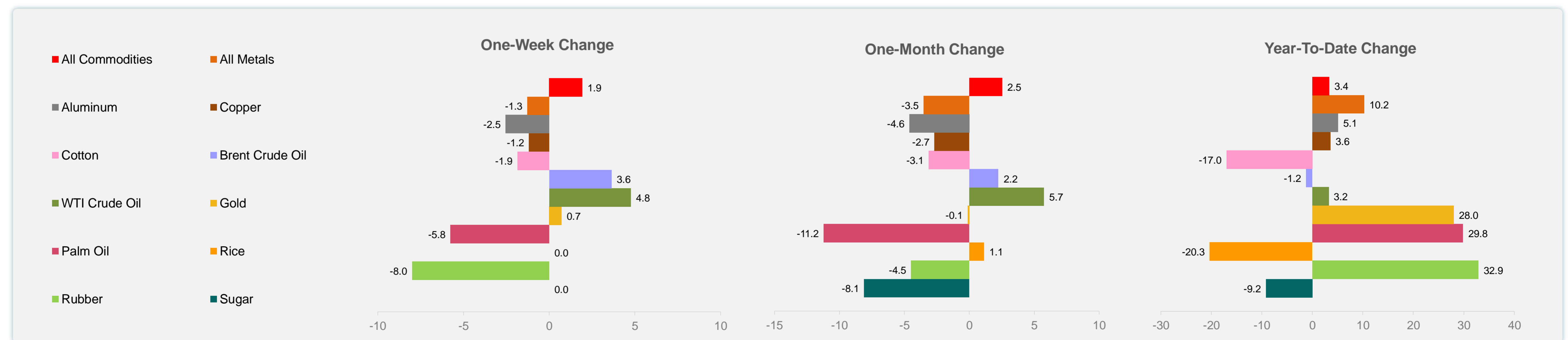
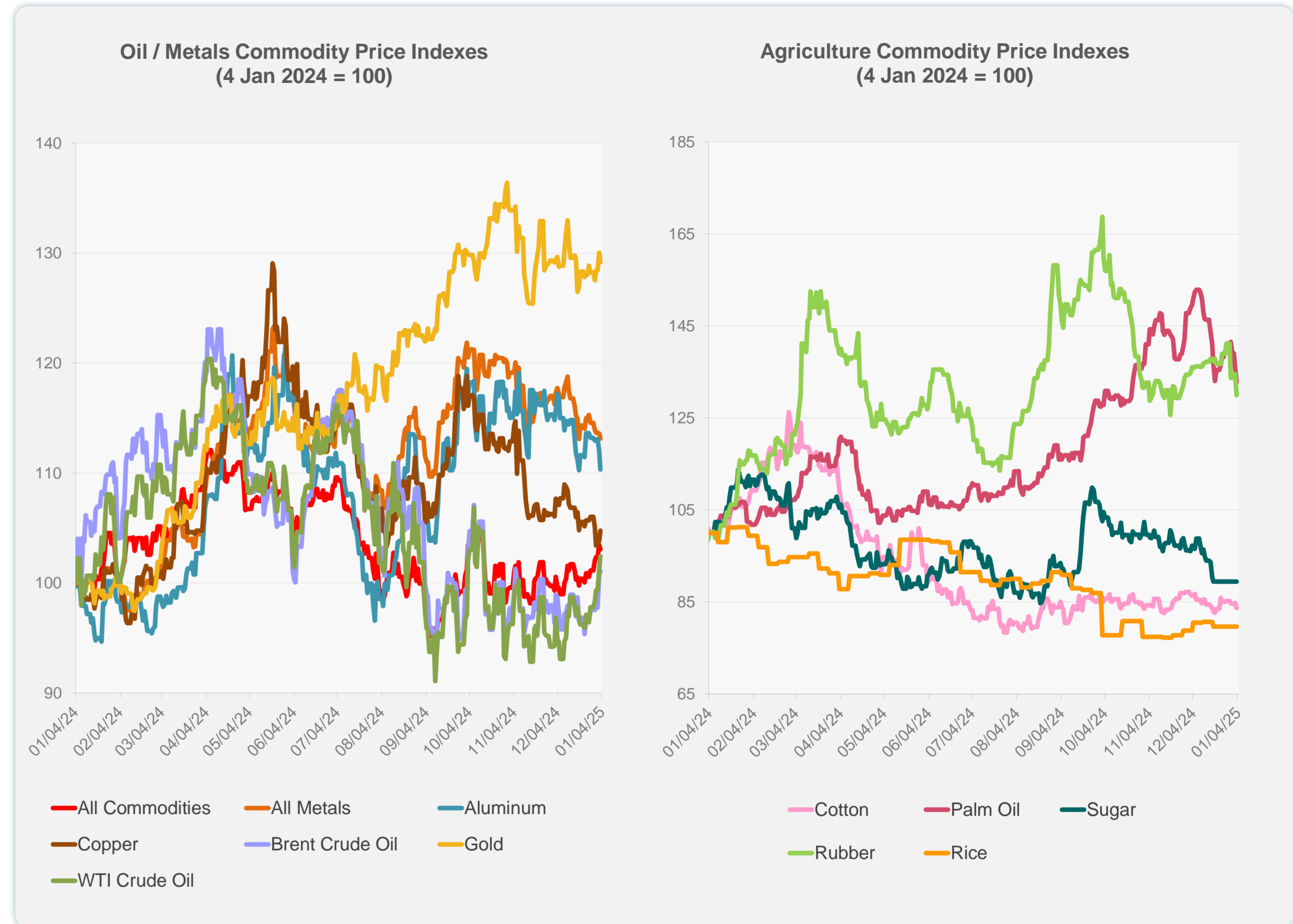
Daily Market Watch
COMMODITY PRICES

6 January 2025, 9:00 AM Manila

	Unit	Latest Closing	% change from Previous Day	% change from 01-Jan-24
S&P All Commodities	US\$	553.64	-0.36	3.36
S&P All Metals	US\$	305.84	-0.44	10.24
Aluminum	US\$/metric ton	2,465.16	-1.56	5.10
Copper	US\$/metric ton	8,767.96	0.88	3.59
Cotton	US cents/lb	65.16	-1.38	-16.99
Brent Crude Oil	US\$/barrel	76.65	0.40	-1.22
WTI Crude Oil	US\$/barrel	73.96	1.13	3.22
Gold	US\$/troy oz	2,640.22	-0.67	27.98
Palm Oil	US\$/metric tonne	1,050.29	-2.40	29.83
Rice ¹	US\$/metric ton	537.00	0.00	-20.33
Rubber ²	US\$/kg	230.00	-3.44	32.87
Sugar	US cents/lb	18.59	0.00	-9.18

¹ Latest closing price from 18 December 2024.

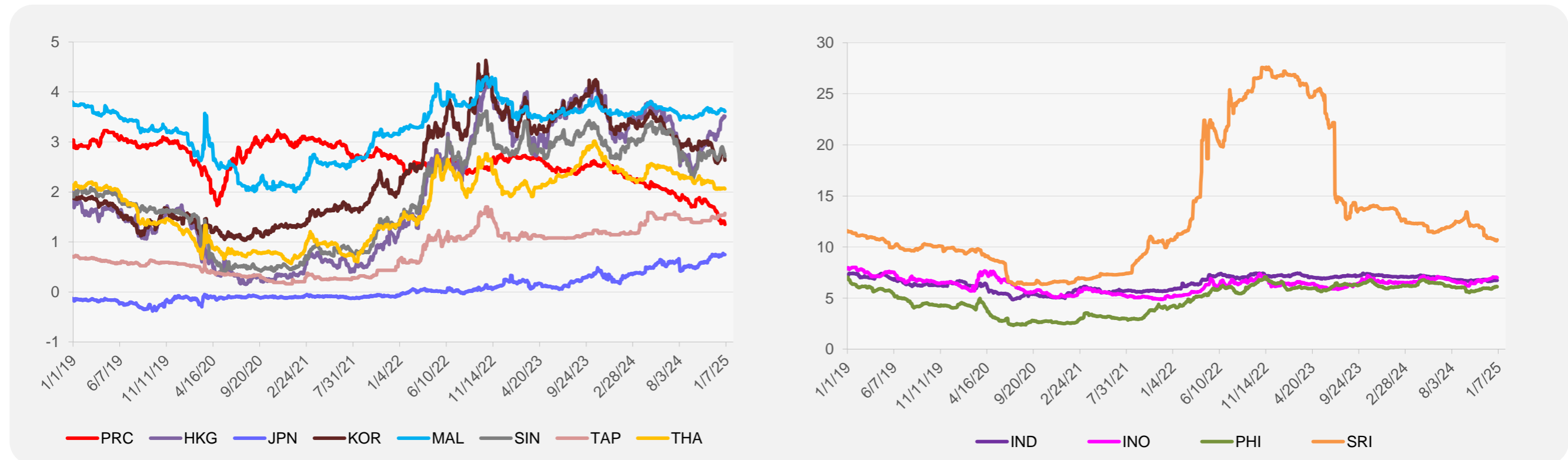
² Singapore Exchange, Ribbed Smoked Sheet Rubber.



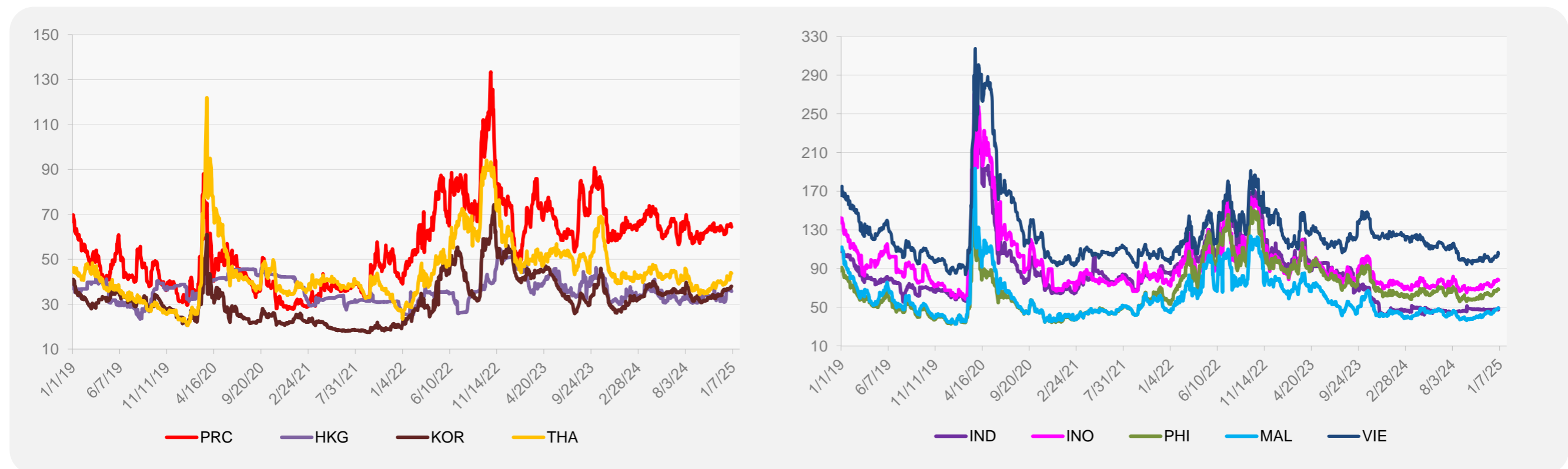
Source: ADB calculations using data from Bloomberg.

ASIA REGIONAL INTEGRATION CENTER
Regional Cooperation and Integration Division (ERIC)
Economic Research and Development Impact Department (ERDI)

5-YEAR LOCAL CURRENCY GOVERNMENT BOND YIELDS (%)



5-YEAR CREDIT DEFAULT SWAP¹



¹ In USD and based on sovereign bonds.
Source: ADB calculations using data from Bloomberg.